

1992 VE 1993 YILLARINDAKİ JEOLojiYE İLİŞKİN BİLİMSEL TOPLANTILAR

Jeoloji biliminin farklı disiplinlerinde düzenlenen bilimsel toplantılar her geçen yıl giderek artmaktadır. Değişik ülkeler ve kuruluşlar tarafından 1992 ve 1993 yıllarında programlanan uluslararası bilimsel toplantıların bir kısmı, "Epi-sode" dergisinin. Aralık 1991 de yayımlanan 14/4 ucu sayısından (sayfa 377-381) alınmış ve meslektaşlarımızın yararına sunulmuştur:

1992

January

January 6-7

MINERAL DEPOSITS (Study Group, Field Trip, and Meeting), Aberdeen, Scotland. (C.M. Rice, Dept. of Geology and Petroleum Geology, Mestori Building, King's College, University of Aberdeen, AB9 2UE, Scotland)

January 18-22

GEOLOGY OF THE ARAB WORLD (First International Conference), Cairo, Egypt., fProfessor Ali Sadek, Conference Chairman, Geology Department, Faculty of Science., Cairo University, Cairo., Egypt, Telex: UNCA! ÖN 943 72)

January 18-25

EARTH SCIENCES, COMPUTERS, AND THE ENVIRONMENT (Hth Australian Geological Convention), Victoria, Australia. (Secretariat, 11th Australian Geological Convention, 232 Bridge Road., Richmond., Victoria 31.21, Australia)

January 20-24

FORUM 1992/MINERALS COLLOQUIUM (2nd Colloquium), Ottawa, Ontario., Canada., (Christy Vodden, Geological Survey of Canada, Energy., Mines and Resources, 601 Booth Street., Ottawa., Ontario K1A 0E8, Canada. Phone: (613) 995-3084; telefax: (613) 996-8059)

February

February 4-6

MINERALS, METALS AND THE ENVIRONMENT (Conference and Exhibition), London., UK. (The Conference Office., The Institution of Mining and Metallurgy., 44 Portland Place., London WIN 4BR, UK.)

February 9-12

LANDSUDES (6th. International Symposium), New Zealand. (Dr. L. Primel, LCPC, 58 Bd. Lefebm, 75732 Paris Cedex, 15., France)

February 1.1-19

EVOLUTION OF DESERTS (International Symposium), Ahmedabad, India., (Dr. A.K. Singhvi, Convener., Symposium on Deserts., Physical Research Laboratory, Navrangpura, Ahmedabad 380 009, India. Phone: 0272-490116(R), 462129(0); telefax: 91-272-445292; telex: 0121.-6397 PRL IM)

February 16-19

PHANEROZOIC BIO-EVENTS AND EVENT STRATIGRAPHY (5th and Final International Conference: of IGCP Project 216, Global Bio-Events), Gnettingen. Germany. (Professor O.H. Walther, Inst. Geol. Palaeont., Goldschmidt-Str. 3, D-3400 Göttingen, Germany)

February 18-20

V.E. MCKELVEY FORUM ON ENERGY RESOURCES (8th Annual). Houston., Texas., USA. (Christine Turner, USGS, BOK, 25046., MS 939., Federal Center, Denver, CO 80225., USA- Phone: (303) 236-1561)

February 23-27

SOUTH ASIAN GEOLOGICAL CONGRESS (1st Geological Congress), Islamabad, Pakistan. (Dr., Hilal A. Raza, Secretary General-GEOSAS 1, e/o Hydrocarbon Development Institute of Pakistan» 230 Nazimuddin Road, F-7/4, Islamabad, Pakistan.)

February 28-29

MESOZOIC MAGMATISM OF EASTERN MARGIN OF INDIA (International Conference), Patna, India. (Prof. N.C. Ghose, Department of Geology, Patna University, Patna, 800 005, India)

March

March

CONTINENTAL TECTONICS AND MAGMATISM OF THE JURASSIC NORTH AMERICAN CORDILLERA (Penrose Conference), Twentynme Palms., California., USA. (David M. Miller, U.S. Geological Survey., 34.5 Middlefield Road, MS-975., Menlo Park, CA 94025, USA. Phone: (415) 329-4923. Or Richard M. Tosdal (same address), Phone: (415) 329-5423)

March 3-30

COMPUTER SIMULATED MINERAL* EXPLORATION WORKSHOP (21 st), Fontainebleau., France., (L. Zanone, Workshop Manager, Ecole- des Mimes de Paris., CGGM-IGM, 35., rue Saint-Honoré, 77305 Fontainebleau Cedex., France. Pphone: (33 1) 64 69 49 30; telefax: (33 1) 64. 69 47 01; telex: 694 736F)

March 4-6

CARBON DIOXIDE REMOVAL (1st International Conference), Amsterdam. The Netherlands. (ICCDR c/o Kivi, P.O. Box 30424., 2500 GK The Hague, The Netherlands. Phone: 3170 391 98 90; telefax: 3170 391 98 40)

March 4-7

FORMER ENSO PHENOMENA IN WESTERN SOUTH AMERICA: RECORDS OF EL NINO EVENTS (International Symposium), Lima., Peru. (Dr., José Macharé, Institute Geofísico del Peru, Apartado 3747, Lima 100, Peru. Telefax: (51-14) 37 02 58)

March 9-11

SEISMIC PROCESSING AND INTERPRETATION-THE* INTEGRATED APPROACH (Seminar), Kristiansand, S. Norway. (Karin B. Hangnass., Conference Manager, Norwegian Petroleum Socly (NPIJ), P.O. Box 1897 Vika, M-01124 Oslo I, Norway Phone: 47 2 43 00 50; telefax: 47 2 55 46 30; * telex: 77 322 nopol n)

March 9-12

SUSTAINABLE DEVELOPMENT:: ENERGY AND MINERAL RESOURCES AND THE ENVIRONMENTAL IMPACT OF THEIR UTILIZATION IN THE CIRCUM-PACIFIC REGION (Symposium), Bangkok, Thailand. (Ms. Mary Stewart, Circum-Pacific Council, 5100 Westheimer Road., Suite 500, Houston., TX 77056, USA. Phone: (713) 622-1; 130; telefax: (713)622-5360)

March 16-20

LUNAR AND PLANETARY SCIENCE CONFERENCE (23rd, Annual), Houston, Texas., USA. (Pamela Jones, LPI Program Services Department, 330.3 NASA Road 11, Houston» TX 77058, USA., Phone: (713) 486-2150)

March 18-21

ASIAPACIFIC MINING CONFERENCE AND EXHIBITION (3rd), Manila, Philippines. (Lawrence Lau., Group Project Manager, Cahners Exposition Group (Singapore)-Pie Lid., Suite 12-01 World Trade Centre., 1 Maritime Square, Singapore 0409. Phone: 2711013; telefax: 2744666; telex: US 39200 CEGSP)

March 30-April 1

PETROLEUM GEOLOGY OF NW EUROPE (4th, Conference), London., UK. (Petroleum Geology of NW Europe Conference 1992: Conference Associates & Services Ltd., Congress. House., 55 New Cavendish, Street, London W1M 7RE, UK. Phone: 071-486 0531; telefax: 071-935 7559)

April

April 6-9

SALT (International Meeting), Kyoto, Japan. (Secretariat, c/o Japan Tobacco Inc., 8th Flora Shinkasumigaseki Building, 3-2 Kasumigaseki 3-chome, Chiyoda-ko, Tokyo 100, Japan. Phone: 03-592-8470; telefax: 03-595-2429)

April 6-10

EUROPEAN GEOPHYSICAL SOCIETY (17th General Assembly), Edinburgh,, UK, (EOS Postfach 49,, Max-Planck-Strasse 1, D-3411 Kaffelbuig-Lindau, FRG)

April 12-16

HIGH-LEVEL RADIOACTIVE WASTE MANAGEMENT CONFERENCE (International Conference), Las Vegas,, Nevada, USA. (James Tulenko, Att.: Transactions office, American Nuclear Society, 555 N. Kensington Avenue, La Grange Park, IL 60525, USA)

April 22-25

HYDROGEOLOGY OF DISCONTINUOUS AQUIFERS UNDER ARID CLIMATES (International Symposium), Marrakech, Morocco., fMohamed Abpuffirassi..Department of Earth Sciences, Faculty of Sciences, Marrakesh, Morocco.. Phone: (212) 4 43 46 49; telefax: (212) 4 43 67 69; telex: 74013 M. FACSMAR)

April 22-23

MINERAL DEPOSIT MODELING IN RELATION TO CRUSTAL RESERVOIRS OF THE ORE-FORMING ELEMENTS (Meeting), Key worth, Nottingham, UK. (The Conference Office,, The Institution of Mining and Metallurgy, 44 Portland Place, London WIN 4BR, UK. Phone: 071 580 3802; telefax.: 071 436 5388; telex: 261410

•• IMMGG

I

j April 24

| *BRITISH GEOLOGICAL SURVEY*
) *MINERALS INDUSTRY FORUM* (Meeting),
I Key worth, Nottingham, UK. (The Conference
j Office, The Institution of Mining and
| Metallurgy, 44 Rutland Place, London WIN
4BR, UK. Phone: 071 580 3802; telefax: 071
436 5388; telex: 261410 IMMGG)

May

May 3-7

GEOLOGY OF DELTAS (International Symposium), Lagos/Port Haurcourt, Nigeria. Sponsored by the International Association of Sedimentologists, IAS. (Michael N. Oti, Secretary-General of Organizing Committee,» Department of Geology,, University of Port Harcourt, PMB 5323» Campus Box 69,, Choba, Port Harcourt,, Nigeria... Telex: 61201» 61205, 61206 MITEL TDS 093)

lay 6-9

GEOTECHNIQUE AND NATURAL HAZARDS (1st Canadian Symposium), Vancouver, British Columbia, Canada, (Organizing; Secretary, Geohazards '92, 970 Burrard St., Vancouver, EC V6Z 1Y3, Canada., Phone: (604) 663-1651; telefax: (604) 663-1940)

May 8-10

GOLDSCHMIDT CONFERENCE (3rd International Conference), Reston, Virginia, USA. (Bruce R. Doe, ILS., Geological Survey, 923 National Center, Reston, VA 22092, USA. Phone: (703) 648-6205; telefax*: (703) 648-6197)

May 8-10

V.M. GOLDSCHMIDT CONFERENCE (International Conference for the Advancement of Geochemistry), Reston, Virginia,, USA. (Donna Ricketts, Conference Coordinator, The Pennsylvania State University, 409 Keller Conference Center, University Park, PA 16802-1304,, USA. Telefax: (814) 865-3749)

May 8-12

LOWER PALAEOZOIC OF IBERO-AMERICA (International Conference), Merida,, Spain. (Juan Carlos Guh'erez-Marco, Instituto de Geologia Económica, Facultad de Ciencias Geológicas 28040 Madrid, Spain., Phone: 34 1 394 50 16; telefax: 34 1 543 91 62; telex: 41798 UCGEO E)

May 9-10

VOLCANISM ASSOCIATED WITH EXTENSION AT CONSUMING PLATE MARGINS (Meeting), Cambridge, UK. (Dr. J.L. Smellie, British Antarctic Survey,, High Cross, Madingley Road,, Cambridge CB3 0ET,, UK. Telefax: (0233) 62616; telex: 817725 BÀSCAM G)

May 18-20

MESOZOIC AND CENOZOIC SEQUENCE STRATIGRAPHY OF EUROPEAN BASINS (International Symposium), Dijon,, France., (Dt. T. Jacquin, Centre des Sciences de la Terre, Université de Bourgogne,, 6, Bid. Gabriel, 21100 Dijon,, France. Telefax: 80395066. Or Dr. P.R. Vail, Rice University, Geology & "Geophysics Dept., P.O. Box 1892,, Houston,- TX 77251,, USA. Telefax: (713) 285-5214)

May 18-23

GEODYNAMIC EVOLUTION OF SEDIMENTARY BASINS (International Symposium), Moscow, USSR» Sponsored by IFP, IGIRG1, and VNTGNI. (Prof. N. Krylov, Institute of Geology and Exploration of Combustible Fuels/IGIRGI, Fersman Street 50,, Moscow 117312, USSR. Phone 124-91-55; telefax: 095-129-41-07)

May 22-24

PAN-AMERICAN CURRENT RESEARCH ON FLUID INCLUSIONS (PACROFIV) (Meeting), Lake Arrowhead, California, USA., (Michael A. McKibben, Department of Earth Sciences, University of California, Riverside, CA 92521-0423» USA. Phone: (714) 787-3444; telefax*: (714) 787-4324)

- May 24-27

THE EURAMERICAN COAL PROVINCE; CONTROLS ON TROPICAL PEAT ACCUMULATION IN THE LATE PALEOZOIC (Meeting), Wolfville, Nova Scotia, Canada. (John H. Calder, Nova Scotia Dept., of Mines and Energy, P.O. Box 1087, Halifax, Nova Scotia B3J 2X1, Canada. Phone:(902) 424-5364.; telefax: (902) 424-0528. Or Martin R. Gibling, Dept. of Geology, Dalhousie University, Halifax,, Nova Scotia B3H 3L5, Canada. Phone: (902) 494-2355)

May 24-29

GLOBAL SEDIMENTARY GEOLOGY PROGRAM (International Workshop), Lawrence, Kansas, USA. (George C. Klein,, Dept. of Geology, University of Illinois, 245 Natural History Bldg., Urbana, IL 61801-2001, USA: Phone: (217) 333-2076; telefax: (217) 244-4996)

May 25-27

GEOLOGICAL SOCIETY OF GREECE (6th International Congress), Athens, Greece,, Emphasis on the geology of the Aegean: also includes special meetings of IGCP Projects 276 and 262. (Assoc. Prof. Dr. D. Papanikolaou, Department of Geology, University of Athens, Panepistimioupoli, Zografou. 157 84 Athens» Greece. Phone: (01) 72 42 743)

May 25-27 (Correction)

GEOLOGICAL ASSOCIATION OF CANADA/ MINERALOGICAL ASSOCIATION OF CANADA (Joint Annual Meeting), Wolfville,, Nova Scotia, Canada. (Wolfville '92,, Acadia University... Wolfville,, Nova Scotia BOP 1X0 Canada. Phone: (902) 542-1902; telefax: (902)542-1454; E-mail: Wfvill92@ace.acadiau.ca)

May 25-29

HYDROCOMP '92 (International Conference), Budapest, Hungary. (HYDROCOMP '92, Organizing Committee, VITUKI, Kvassay J. út 1., H-1095 Budapest, Hungary. Phone: 36 (1) 41 620; telefax: 36 (1) 13 41 514; telex: 224969)

May 25-29

WORLD MINING' (15th Congress), Madrid, Spain. (Comité Espanol Organizador de XV Congreso Mundial de Minería,, CI. Rias Rosas 21, 28003 Madrid, Spain., Phone: 442 13 66; telefax: 441 78 56; telex: 48968 AIM! E)

June

June 1-5 (Correction)

EUROPEAN ASSOCIATION OF EXPLORATION GEOPHYSICISTS (54th Annual Meeting and Technical Exhibition), Paris, France. (Evert van der Gaag, Business Manager EAEG, PO Box 298, 3700 AG Zeist, The Netherlands, Phone: +31 (0)3404 56997.; telefax: +31 (0)3404 62640)

June 1-5

EUROPEAN ASSOCIATION OF PETROLEUM GEOSCIENTIST & ENGINEERS (4th Annual Meeting; and Technical Exhibition), Paris, France. (Evert van dec Gaag, Business Manager EAPG, P.O. Box 298, 3700 AG Zeist, The Netherlands. Phone: +31 (0)3404 62655; telefax: +31 (0)3404 62640)

June 1-6

MAGMA CHAMBERS AND PROCESSES IN ANORTHOSITE PETROGENESIS (Meeting), Rogaland, Norway. Sponsored by IGCP Project 290. (J.-C. Duchesne, Geologie, Petrologie et Geochimie, Université de Liege, Sart Tilman B20, B-4000 Liege, Belgium. Phone: (32) 41-56 22 51; telefax: (32) 41-56 22 02. Or M.D. Higgins, Sciences de la Terre, Université du Québec a Chicoutimi, Chicoutimi, Quebec G7H 2B1, Canada, Phone: (418) 545-5052; telefax: (418) 545-5012)

June 8-13

GROUND PENETRATING RADAR (4th International Conference), Rovaniemi, Finland. (Pauli Hanninen, Geological Survey of Finland, P.O. Box 1237, SF-70701 Koopka, Finland)

June 8-19

SCIENTIFIC COMMITTEE ON ANTARCTIC RESEARCH (22nd Meeting), Bariloche, Argentina. (XXII SCAR. Organizing Committee, Cerrito 1248, Buenos Aires 1010, Argentina. Phone: 812-2086; telefax: 54-1-812-2039)

June 14-17

AMERICAN ASSOCIATION OF PETROLEUM GEOLOGISTS mé SEPM (Society for Sedimentary Geology) (Annual Meeting), Washington D.C., USA. (Convention Department, AAFG, Box 979, Tulsa, OK 74101, USA)

June 16-17

NEOTECTONICS—RECENT ADVANCES (International Conference), Geological Society, London, UK. (Prof. C. Vita-Finzi, Department of Geology, University College, Gower Street London WC1E 6BT., UK. Phone: (071) 387-7050, exl. 2383; telefax: (071) 388-7614)

June 17-20

GEOCHEMICAL SIGNALS IN LACUSTRINE SEQUENCES (IGCP-324! GIDPALS) (Annual Meeting), Madrid, Spain. (Dr. José P. Calvo, Dpto. Petrología, Fac. CC Geológicas, Universidad Complutense, 28040 Madrid, Spain. Phone: 34 1 3944912; telefax: 34 1 5439162)

June 21-26

SPANISH GEOLOGICAL CONFERENCE (3rd) and *LATIN AMERICAN GEOLOGICAL CONFERENCE* (7th) (International Conferences), Salamanca, Spain. (ODECO, Organization de Congresos (III C.G.E./VII C.L.A.B.), Avd. Atemania, 41, bap 37007 Salamanca, Spain. Phone: 923 210728)

June 22-26

BAUXITES, ALUMINA, AND ALUMINIUM (7th ICSOBA) and *INTERNATIONAL WORKSHOP OF IGCP-287 (TETHYAN BAUXITES)* (3rd) (International Congress and Workshop), Balatonalmádi, Hungary. (Prof. Dr. Bardossy, Gy., International Congress of * ICSOBA c/o Hungalu, P.O. Box 30, H-1387, Budapest 62, Hungary., Telefax: (36-1) 1402723; telex: 22-5471 mat h)

June 22-26*

STUDY OF BAUXITES, ALUMINA AND ALUMINIUM (ICSOBA) and WORKING MEETING OF IGCP PROJECT 287 (TETHYAN BAUXITES) (7th International Congress), Balatonalmádi, Hungary. Organized by the Hungarian Society of Mining and Metallurgy and HUNGALU Hungarian Aluminium Corporation Organizing Committee. (Prof. Gy. Bardossy, D. Sc. (Chairman), P.O. Box 30, H-1387, Budapest 62, Hungary. Telefax: 36 1 14027.23; telex: 22-5471 mat h)

June 28-July 1

PALEONTOLOGY (5th North American Convention), Chicago, Illinois, USA. (Dr. Peter R. Crane, Field Museum of Natural History, Roosevelt Road, at Lake Shore Drive, Chicago, IL 60605-2496, USA)

June 29-July 2

SMALL SATELLITES SYSTEMS AND SERVICES (1st International Symposium), Arcachon, France. (Claude Salmon-CNES-DC/SC/EC, 18, avenue E. Belin, 31055 Toulouse Cedex, France. Phone: (33) 61 27 34 72; telefax: (33) 61 28 13 27)

June 29-July 3

INTERPREVENT 199.2-PROTECTION OF HABITAT AGAINST FLOODS, DEBRIS FLOWS AND AVALANCHES (Meeting), Berne, Switzerland. (Interprevent 1992, c/o Bundesamt für Wasserwirtschaft, Postfach 274.3, CH-3001 Berne, Switzerland)

July

July 1-3

EVOLUTION OF INTERNAL ZONES OF THE EASTERN ALPS AND-CARPATIANS AND OF THE PANNONIAN BASIN (Conference), University of Graz, Austria. (Dr. Franz Neubauer, Geological Dept., University of Graz, Heinrichstr. 26., A-8010 Graz, Austria. Phone: 43-316-380-5594; telefax: 43-316-382885)

July 5-9

EROSION, DEBRIS FLOWS AND ENVIRONMENT IN MOUNTAIN REGIONS (International Symposium), Chengdu, PRC. (Dr. Shang Xiangchao, Institute of Mountain Disasters & Environment, Chinese Academy of Sciences, Chengdu PO Box 4 S 7, Sichuan 610015, PRC. Phone: 581260-562 or 583433-562; telefax: 582846; telex: 600321 51CDCN; cable: 5174)

July 5-10

ZEOLITE CONFERENCE (9th International), Montreal, Quebec, Canada. (Dr. David E.W. Vaughan, 9th International Zeolite Conference, Exxon R&E, Route 22, East Anna, NJ 08801, USA. Phone: (201) 730-2896; telefax: (201) 730-3042)

My 6-10

CORE MANTLE BOUNDARY REGION-STRUCTURE AND DYNAMICS (3rd Symposium), Mizusawa, Iwate Prefecture, Japan. (Dr. Takeshi Yokutake, Earthquake Research Institute, University of Tokyo, Bunkyo-ku, Tokyo 112, Japan. Telefax: 81-3-3816-1159)

July 13-22

WATER-ROCK INTERACTION (7th International Symposium), Park City, Utah, U.S.A. (Dr. Youstf Khamka, U.S. Geological Survey, MS 427, 345 Middlefield Road, Menlo Park, CA 94025, USA)

My 15-18

URBAN GEOLOGIC HAZARDS (2nd Latin American Symposium) and *ENVIRONMENTAL GEOLOGY* (2nd Colombian Conference), Pereira, Risaralda, Colombia... (Dr. Fernando Rosero Diaz, Secretario Ejecutivo, Corporación Autónoma Regional de Risaralda Carder., Calle 25 N° 7-4, Pisos 1, 3, Pereira., Risaralda, Colombia. Phone: (5763) 354152; telefax: 963 355501)

July 19-25

EARTHQUAKE ENGINEERING (10th World Conference), Madrid, Spain. (10WCEE, c/o Ttlesa, Londres 39-1°B, 28028 Madrid, Spain)

July 20-25

COAL PETROLOGY (International Committee Meeting), University Park, Pennsylvania, USA. (Dr. Alan Davis, Energy and Fuels Research Center, 157 Deike Bldg., Pennsylvania State University, University Park, PA. 16802, USA. Phone: (814) 865-6544; telefax: (814) 865-3573)

July 29-August 1

HISTORY OF GEOLOGY (Meeting), Troy, New York, USA. (Gerald M. Friedman, Northeastern Science Foundation, P.O. Box 746, Troy, NY 12181-0745, USA. Phone: (518) 273-3247; telefax: (518) 273-3249)

August

August

CARIBBEAN GEOLOGICAL CONFERENCE (13th), Pinar del Rio, Cuba. (13th Caribbean Geological Conference, Sociedad Cubana de Geología, Apariado 37, GH-10100, Chidada de la Habana, Cuba.)

August 1-14

GLOBAL CHANGE (International Meeting)* Washington, D.C., USA. Sponsored by the American Congress on Surveying and Mapping and the American Society for Photogrammetry and Remote Sensing. (ACSM/ASFRS, 2110 Link Falls Street, Falls Church, VA 22046, USA)

August 2-14

**INTERNATIONAL SOCIETY FOR
PHOTOGRAMMETRY AND REMOTE
SENSING CONGRESS** (17th), Washington,
D.C., USA., (XVII ISPRS Congress
Secretariat, P.O.-Box 7147,, Reston, VA
22091, USA)

August 8-10

VENUS (International Colloquium), Pasadena,
California, USA., (Pamela Jones, Program
Services Department, Lunar and Planetary
Institute, 3303 NASA Road 1,, Houston, TX
77058-4399, USA. Phone: (713) 486-2150; <
telex: (713)486-2160)

August 9-14

**INTERNATIONAL GEOGRAPHICAL
CONGRESS** (27th), Washington,, D.C., USA.,
(Dr. Anthony de Souza, 27th IGU Congress
Secretariat., 17th & M St. NW, Washington,
DC 20036, USA)

August 14-22

**INTERNATIONAL FIELD CONFERENCE
ON PROGRESSIVE DEVELOPMENT OF
THE LATE PALEOZOIC TO TERTIARY
ACCRETIONARY PRISMS WITHIN
SOUTHWEST JAPAN** (Joint Meeting of
IGCP Project 233 (Terranes in the
Circum-Atlantic Paleozoic Orogens) and
IGCP Project 267 (Paleozoic Terranes in
the Circum-Pacific Orogens)), Kochi to
Kyoto, Japan., (R.D. Dallmeyer,
Department of Geology, University of
Georgia., Athens, GA 30602, USA., Phone:
(404) 542-7448; telefax: (404) 542-2425)

August 24-28

**EROSION AND SEDIMENT TRANSPORT
MONITORING PROGRAMMES IN RIVER
BASINS** (International Symposium), Oslo.,
Norway. (Dr. Jim. Bogen., Symposium on
Erosion and Sediment Transport Monitoring
Programmes, Hydrology Department,
Norwegian Water Resources and Energy
Administration, P.O. Box 5091, Majorstua,
N-0301 Oslo 3, Norway., Phone: 47 2 95959.5;
telex: 47 2 959000; telex: 79 397 NVBO N)

August 24-September 3

**INTERNATIONAL GEOLOGICAL
CONGRESS** (29th), Kyoto., Japan. (Dr.
Tadashi Sato, Chairman, Japanese National
Committee on Geology., Institute of
Geoscience, The University of Tsukuba,
Ibaraki 305, Japan)

August 25-28

**MODERN AND ANCIENT CLASTIC TIDAL
DEPOSITS** (2nd International Research
Symposium), Wilhelmshaven, Germany. (Burg
Hemming, Senckenberg Institute., Schlegelstr.
39a, 2940 Wilhelmshaven, Germany)

August 30-September 3

**CARBONATE STRATIGRAPHIC
SEQUENCES: SEQUENCE BOUNDARIES
AND ASSOCIATED FACIES** (emphasis on
outcrop and processes studies) (IAS/SEPM
Research Conference), La Se., Spain. (Toni
Simo, Dept. of Geology and Geophysics.,
University of Wisconsin, 1215 W. Dayton St.,,
Madison, WI 53706., USA. Phone: (608)
262-5987; telefax: (608) 262-4693; E-mail:
simo@geology.wisc.edu)

August 31-September 2

**LARGE METEORITE IMPACTS AND
PLANETARY EVOLUTION** (International
Conference), Sudbury, Ontario, Canada.
(Sudbury 1992, c/o B. Dressier, Ontario
Geological Survey, 77 Grenville St.,,
Toronto, Ontario M7A 1W4., Canada.,
Phone: (416) 965-4817; telefax: (416)
324-4933)

September

September

DEEP-WATER MASSIVE SANDS (1st
Arthur Holmes European Conference), Sicily.,
(Heidi Gould, Conference Officer., The
Geological Society, Burlington House,
Piccadilly., London W1V 0JU, UK. Phone:
071 287 1433)

September 6-12

**SEISMIC REFLECTION PROFILING OF
THE CONTINENTAL LITHOSPHERE** (5th
International Symposium), Banff., Alberta,
Canada., (R.M. Clowes., Lithoprobe Secretariat,
6339 Stores Road, University of British
Columbia, Vancouver, BC V6T 1Z4, Canada.
Phone: (604) 822-4202; telefax: (604)
822-6958)

September 7-11

GEOLOGY OF THE BLACK SEA REGION
(International Symposium), Ankara, Turkey.
(ISGB Sekreterliği., MTA Genel Müdürlüğü.
06520 Ankara, Turkey.. Phone: (90M-223 69
27; telefax: (90M-222 82 78)

September 8-12

**APPLICATIONS OF STRAIN: FROM
MICROSTRUCTURES TO MOUNTAIN
BELTS** (Meeting), Uscplftf) Mills, Nova
Scotia, Canada. (Mark Brandon, Dept. of
Geology and Geophysics, Yale University;
P.O. Box 6666., New Haven, CT 06511-8130,
USA. Phone: (203) 432-3135)

September 9-15

**THE TRANSITION FROM BASALT TO
METABASALT: ENVIRONMENTS,
PROCESSES, AND PETROGENESIS**
(Meeting), Davis, California, USA. (Peter
Schiffman, Dept. of Geology, University of
California., Davis, CA 95616, USA., Phone:
(916) 752-3669)

September 13-18

GEOSTATISTICS (4th International
Congress), Traia, Portugal. (Geostat Congress
1992, Centre de Vaxizacao de Recursoa
Minerals-IST Av. Rovisco Pais, P-1092
Lisboa Codex, Portugal. Phone: (1) 801210;
telefax: (1) 899242)

September

**CALEDONIDES OF THE ANGLO-
BRABANT MASSIF AND ADJACENT
AREAS** (Meeting), Keyworth, Nottingham-
shire, UK. (British Geological Survey,
Keyworth, Notts. NG12 5OG. UK. Phone:
(06077) 6111, ext. 3152; telefax: (06077)
660.2; telex: 378173 BGSKEY G)

September 17-18

**EARLY PALAEOZOIC-ACADIAN BISTORI
OF THE ANGLO-BRABANT MASSIF AND
ADJACENT CAUWOMMIS** (Meeting)
Keyworth, UK. (Conveners, British Geological
Survey, Keyworth Notts. NG12 5GG; UK.
Phone: (06077) 6111, ext. 3152; telefax:
(06077) 6602; telex: 378173 BGSKEY G)

September 21-25

PALEOCEANOGRAPHY-GLOBAL CHANGE
(4th International Conference), Kiel., FRG.
(ICP IV Organizing Committee) c/o
GEOMAR, Wischhofstrasse 1-VB/dg., 4,
D-2300 Kiel S4, FRG)

September 25-30

**ORIGIN AND EMPLACEMENT OF
LOW K SILICIC MAGMAS IN
SUBDUCTION SETTINGS** (Penrose
Conference), Chelan, Washington, USA.
(Jim Beard, Virginia Museum of National
History., 100S Douglas Ave., Martinsville,
VA 24112, USA. Phone: (703) 666-8611.;
telefax: (703) 632-6487)

October

October 4-9

FLUID-VOLCANO INTERACTIONS
(Penrose Conference), Warm Springs, Oregon.
(Steve Ingebritsen, U.S. Geological Survey,
MS 439., 345 Middlefield Rd., Menlo Park.,
CA 94025, USA. Phone: (415) 329-4422.;
telefax: (415) 329-4463)

October 7-10

CONTINENTAL EARTHQUAKES (2nd
International Conference), Beijing, China.
(Secretariat, II International Conference on
Continental Earthquakes, State Seismological
Bureau, No. 63., Fuxing Avenue* Beijing
100036, China)

October 12-15

**ATLANTIC GENERAL EVENTS
DURING NEOGENE** (1st Congress),
Lisbon, Portugal. (Centro de Estratigrafia e
Paleobiologica (F.N.I.C.) Quinta Da Torre,
P-2825 Monte de Oaparica, Portugal.
Phone: (1) 295 4465; telefax: (1) 295 7668)

: October 12-16

! *ENERGY, ENVIRONMENT AND TECHNOLOGICAL INNOVATION* (2nd International Congress), Rome, Italy. (Secretaría CPA: Comisión de Promoción Académica, Facultad de Ingeniería, Universidad Central de Venezuela, Edif. Decanato, Caracas. 1050, Venezuela. Phone: 58-2-4627538/7612; telefax: 58-2-6627327)

October 17-22

INTERDISCIPLINARY APPROACHES IN HYDROLOGY AND HYDROGEOLOGY (Meeting), Portland, Oregon, USA. (American Institute of Hydrology., 341.6 University Ave. SE, Minneapolis, MN 55414-3328, USA. Phone: (612) 371030)

October 26-29

GEOLOGICAL SOCIETY OF AMERICA (Annual Meeting), Cincinnati, Ohio, USA. (Jean Kinney, GSA Headquarters, P.O. Box 9140, Boulder, CO 80301, USA. Phone: (303) 447-2020)

November

November 29-December 2.

CIRCPAC-PACIFIC COUNCIL ON ENERGY AND MINERAL RESOURCES (Conference), Kuala Lumpur, Malaysia. (Ms. Mary Stewart, Council Secretary, Circum-Pacific Council on Energy and Mineral Resources., 5100 Westheimer Road., Houston, TX. 77056., USA. Phone: (713) 622-1130)

1993

May

INQUA COMMISSION ON FORMATION AND PROPERTIES OF GLACIAL DEPOSITS: WORK GROUPS ON GLACIAL TECTONICS AND MAPPING GLACIAL DEPOSITS (Field Conference and GIS Workshop), Regina., Saskatchewan, Canada. (D.J. Saichyn, Dept. of Geography, University of Regina., Regina, Saskatchewan S4S 0A2, Canada. Phone: (306) 585-4030; telefax: (306) 585-4815. Or J.S. Aber., Earth Science., Emporia State University, Emporia, KS 66801, USA. Phone: (316) 341-5981; telefax: (316) 341-5997)

May 17-19

GEOLOGICAL ASSOCIATION OF CANADA/ MINERALOGICAL ASSOCIATION OF CANADA (Joint Annual Meeting), Edmonton., Alberta, Canada. (I.W. Kramers, Alberta Geological Survey, P.O. Box 83,30, Station F. Edmonton, Alberta T6H 5X2, Canada., Phone: (403) 438-7644; telefax: (403) 438-3644)

June 7-11 (Correction)

EUROPEAN ASSOCIATION OF EXPLORATION GEOPHYSICISTS (55th Annual Meeting and Technical Exhibition), Stavanger, Norway. (Evert van der Gaag.,

Business Manager EAEG, TO Box 298., 3700 AG Zeist, The Netherlands, Phone* +31 (0)3404 56997; telefax: +31 (0)3404 62640)

June 7-11

EUROPEAN ASSOCIATION OF PETROLEUM GEOSCIENTIST & ENGINEERS (5th Annual Meeting and Technical Exhibition), Stavanger, Norway. (Evert van der Gaag., Business Manager "EAPG. FO BOX 298, 3700 AG Zeist, The Netherlands., Phone: +31 (0)3404 626.55;- telefax: +31 (0)3404 62,640)

July

ENVIRONMENTAL CONTEXT OF HUMAN EVOLUTION (International Scientific Congress and Exhibition), The Netherlands and Indonesia. (Dr. Hans Beijer, Geological Survey of the Netherlands., P.O. Box 157, NL-2000 AD Haarlem, The Netherlands. Telefax: 31 23 351614)

July 18-23

"CLAY CONFERENCE (10th International Conference in conjunction with Commission VII of the International Soil Science Society), Adelaide., South Australia. (Dr. Tony Eggleton, Geology Department, ANU, GPO Box 4., Canberra., ACT 2601, Australia)

August

INTRAPLATE VOLCANISM: THE POLYNESIAN PLUME PROVINCE (International Workshop), Tahiti, French Polynesia. (Workshop Tahiti S 993., C. Dupuy, Centre Géologique et Géophysique., Case 060, Université Montpellier IS., place E. Bataillon., 34095 Montpellier Cedex 5, France. Phone: (33) 67-634-983; telefax: (33) 67-523-908)

August 14-21.

BELT SYMPOSIUM III (Field Conference), Whitefish., Montana., USA. (Belt Symposium III, c/o Western Experience» 6986 El Camino Real., Suite B-263, Carlsbad, CA 92009, USA)

August 23-29

GEOMORPHOLOGY (3rd International Conference), Hamilton., Ontario, Canada. (3rd International Conference on Geomorphology, McMaster University, Hamilton, Ontario L8S 4K1, Canada., Phone: (416) 525-9140 ex. 4,535; telefax: (416) 546-0463; telex: 061-8347)

September

CULTURAL HERITAGE COLLECTED IN LIBRARIES OF GEOSCIENCE, MINING AND METALLURGY-PAST, PRESENT AND STRATEGY FOR THE NEXT MILLENNIUM (International Symposium), Freiberg., Saxony, Germany. (Dr. Peter Schmidt, Bibliothek, Bergakademie Freiberg, Schließfach 47, D-0-9200 Freiberg (Sachsen), Germany. Phone: 51 32 35)

September

CULTURAL HERITAGE COLLECTED IN LIBRARIES OF GEOSCIENCE, MINING AND METALLURGY-PAST, PRESENT AND STRATEGY FOR THE NEXT MILLENNIUM (International Symposium), Freiberg, Saxony; Germany. (Dr., Peter

Schmidt, Bibliothek, Bergakademie Freiberg., Schließfach 47, D-0-9200 Freiberg (Sachsen), Germany. Phone: 51 32 35)

September

ALPINE ALGAE- (International Symposium and Field Meeting on fossil algae of the Alpine region), Munich-Vienna. (Dr. Richard Höfling, "Alpine Algae," Institute für Paläontologie und Historische Geologie, Universität München, Richard-Wagner-Str. 107/1, D-8000 München 2, Germany/Phone: (089) 5203366; telefax: (089) 5203286)

September 13-21.

CAMPATHO-BALCAN GEOLOGICAL ASSOCIATION (CBGA) (15th Congress), Budapest, Hungary. (Geological Society of Hungary., P.O. Box 433., H-1371 Budapest, Hungary. Phone: (36-1) 2019129; telefax: (36-1) 1561215; telex: MTESZ MFT 224343)

September 18-26

ASSOCIATION OF EUROPEAN GEOLOGICAL SOCIETIES (AEGS) (Mi Congress), Budapest, Hungary. (Geological Society of Hungary., P.O. Box 433., H-1371 Budapest, Hungary. Phone: (36-1) 2019129; telefax: (36-1) 156121-5; telex: MTESZ MFT 224343)

September 21-26

ASSOCIATION OF EUROPEAN GEOLOGICAL SOCIETIES (8th Meeting), Budapest, Hungary. Organized by the Geological Society of Hungary in cooperation with the Association of Hungarian Geophysicists under the auspices of the Association of European Geological Societies. (Secretary-General I. Veto, MAEGS-8, Org. Corrm. Geol. Soc. of Hungary., H-1027 Budapest, Fo u. 68., Hungary. Phone: (33-1) 201-91-29; telefax: 36-1-156-1215; telex: MTESZ MFT 22-43-43)

September 22-26

"LATINOAMERICANO DE LA CIENCIA DEL SUELO (12th Congress), Salamanca, Spain. (Dr. J.R. Gallardo Lancho, I.E.T./CSIC, Aptdo. 257, Salamanca, 37071., Espana, Spain. Phone: (923) 219606; telefax: (923) 219609)

September 25-October 1

"INTERNATIONAL ASSOCIATION OF VOLCANOLOGY AND CHEMISTRY OF THE EARTH'S INTERIOR (General Assembly), Canberra., Australia. (IAVCEI ACTS, GPO Box 2200. Canberra., ACT 2601, Australia., Phone: 61 6 257.3299; telefax: 61 6 2573256)

September 27-30

ENVIRONMENTAL BIOGEOCHEMISTRY (11th International Symposium), Salamanca., Spain. (Dr., J.F. Gallardo Lancho, I.E.T./CSIC, Aptdo. 257, Salamanca 3707 S., Espana., Spain., Phone: (923) 219606; telefax: (923)219609)

Wish, to announce meetings of international significance? Send brochure or details to *Episodes*, P.O. Box 919, Herndon, VA 22070-0919, USA, at least one month in advance of publication date. Q



Yerbilimleri Etüd ve Müşavirlik Ltd. Şti.

Farabi Sokak No. 20/14 Tel : (4) 427 30 43 - 467 66 73
06680 Kavaklıdere - ANKARA Fax : (4) 467 96 58

TMMOB. JMO No. : 1
Ticaret Oda No. : 47/432
Ticaret Sicil No. : 36415
Seğmenler V.D. : 7709870026

JEOLOJİ MÜHENDİSLERİ ODASI
BÜRO TESCİL NO : 1

DENEYİM, BİLGİ VE
HİZMETTE DE No:1

BARAJ VE SULAMA PROJELERİNİN JEOLojİK ETÜDLERİ, TÜNEL GÜZERGAHI ETÜDÜ, YERALTISUYU ETÜDÜ, HAVZA ETÜDÜ, İÇME VE KAYNAKSUYU ETÜDLERİ, TEMEL ARAŞTIRMALARI, HEYELAN VE KAYMA SAHASI ETÜDLERİ, ZEMİN TANIMLAMA DENEYLERİ, ENDÜSTRİYEL HAMMADDE VE MADEN SAHASI ETÜDLERİ, FİZİBİLİTE VE PROJE ÇALIŞMALARI, YERBİLİMLERİNDE SÜREKLİ DANIŞMANLIK.

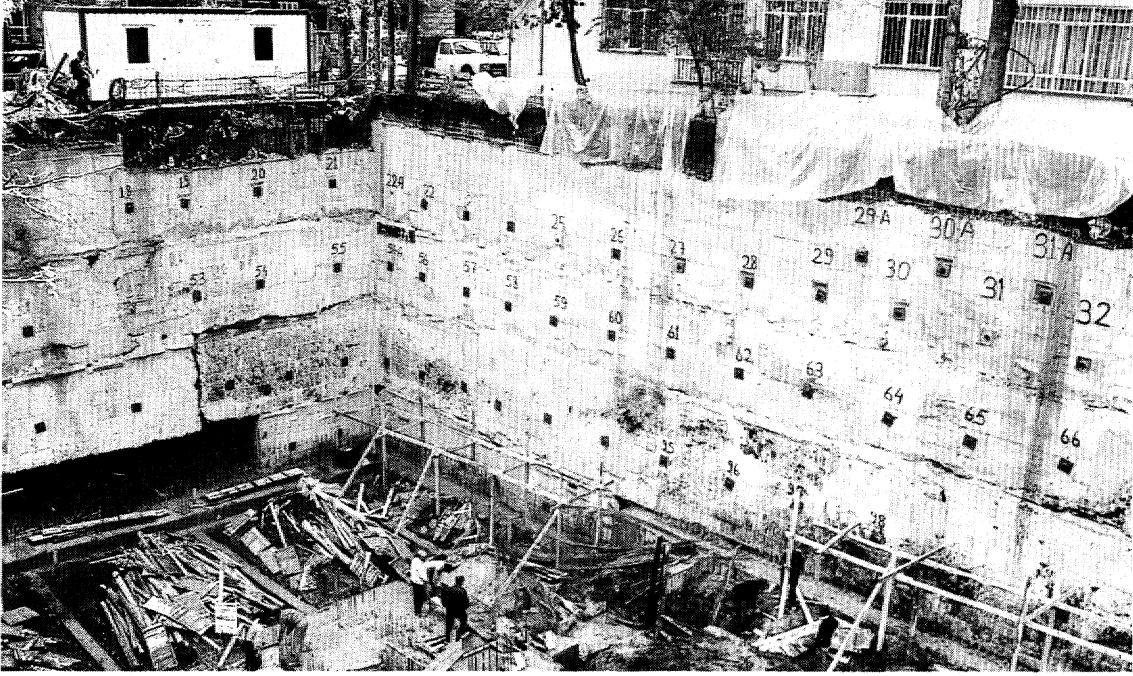
Genel Jeoloji

Jeoteknik Hizmetler

Hidrojeoloji

TEKS AN TEMEL A.Ş.

TEMEL-ENJEKSİYON-KAZIK-SONDAJ-ANKRAJ İNŞAAT VE TAAHHÜT ANONİM ŞİRKETİ



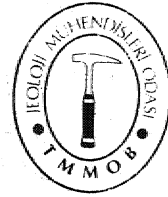
KONULARIMIZ

- a** **JEOLJİK ETÜDLER**
Yol, Otoyolu, Demiryolu, Köprü ve Tünel, Boru Hatları, Baraj ve Su Yapılan, Sınai Tesisler, Toplu ve Çokkatlı Binalar
- m** **TEMEL VE ZEMİN ETÜDLERİ**
- a** **ZEMİN SONDAJLARI**
- a** **ZEMİN VE KAYA MEKANİĞİ LABORATUVAR DENEYLERİ**
- a** **TEMEL MÜHENDİSLİĞİ ÇALIŞMALARI**
- a** **ANKRAJ ÇALIŞMALARI**
- a** **KAZIK ÇALIŞMALARI**
- a** **ENJEKSİYON ÇALIŞMALARI**
- a** **HİDROJEOLJİK ETÜDLER**
- a** **SU SONDAJLARI**
- a** **ALTYAPI İNŞAATLARI**

ISGB
KARADENİZ BÖLGESİ JEOLJİSİ
ULUSLARARASI SEMPOZYUMU
Ankara, 7-11 Eylül 1992



SEPTEMBER (EYLÜL) 7-11,1992 ANKARA-TURKEY



MTA GENEL MÜDÜRLÜĞÜ
VE
TMMOB JEOLJİ MÜHENDİSLERİ ODASI
TARAFINDAN DÜZENLENMİŞTİR

JMO-ARAZİ MALZEMELERİ SATIŞ LİSTESİ



ÇANTA

BÜYÜK. BOY: 35 x 27 x 10 cm boyutlarında fıstıklı yeşil renkli çadır bezinden, ayarlanabilir askılı ve üç bölmelidir;

KÜÇÜK. BOY: (Japon) çanta tipi:

28 x 32 x 32 x 13 cm boyutlarında fıstıklı yeşil renkli parafinli, parafinsiz çadır bezinden, ayarlanabilir boyutlarda (28-32 cm) iki büyük iki küçük (biri termuarlı) bir haritalık cebi olmak üzere toplam beş bölmesi bulunan ayarlanabilir - askılı ve kemere takılarak taşınabilecek özelliktedir.

ÖEFTER

17,5 x 12,5 cm (yan cepte taşınabilir boyutlarında, 96 sayfa birinci hamur düz beyaz ve kareli kağıttan oluşan defterin başında,; ilk yardım, bilgileri ve eğitim dönüştürme çizelgesi,, sonunda ise zaman çizelgesi ve çeşitli pratik mühendislik bilgileri içeren. 12 sayfalık eki bulunmaktadır.

Ederi: 1.3.000 TL, üyelerimize ve yayın abone üyesi öğrencilere 10.000 TL.

ÇEKİÇ

Tamamen elışı olup 33 cm boyunda. 110 gr ağırlığında, kesme kösele saplıdır.

PUSULA

Hope marka, son model ve ağırlık askılı, önceden sipariş verilme koşuluyla,

ÇEKİÇ BELASKISI

Kalın, deri.

Ederi: 4.000 TL., üyelerimize ve yayın, abone üyesi öğrencilere 3.000 TL

İJJP

İjpp super marka 10 x (Japon) önceden sipariş verilme koşuluyla,

ALTİMETRE:

Thomman marka önceden sipariş verilme, koşuluyla

JEOLJİ MÜHENDİSLİK ROZETİ

Ederi 6.000 TL:

Ederi 6.000 TL:

ÇIKARTMA

Ederi 5.000 TL.

HARİTA KARTPOSTAU

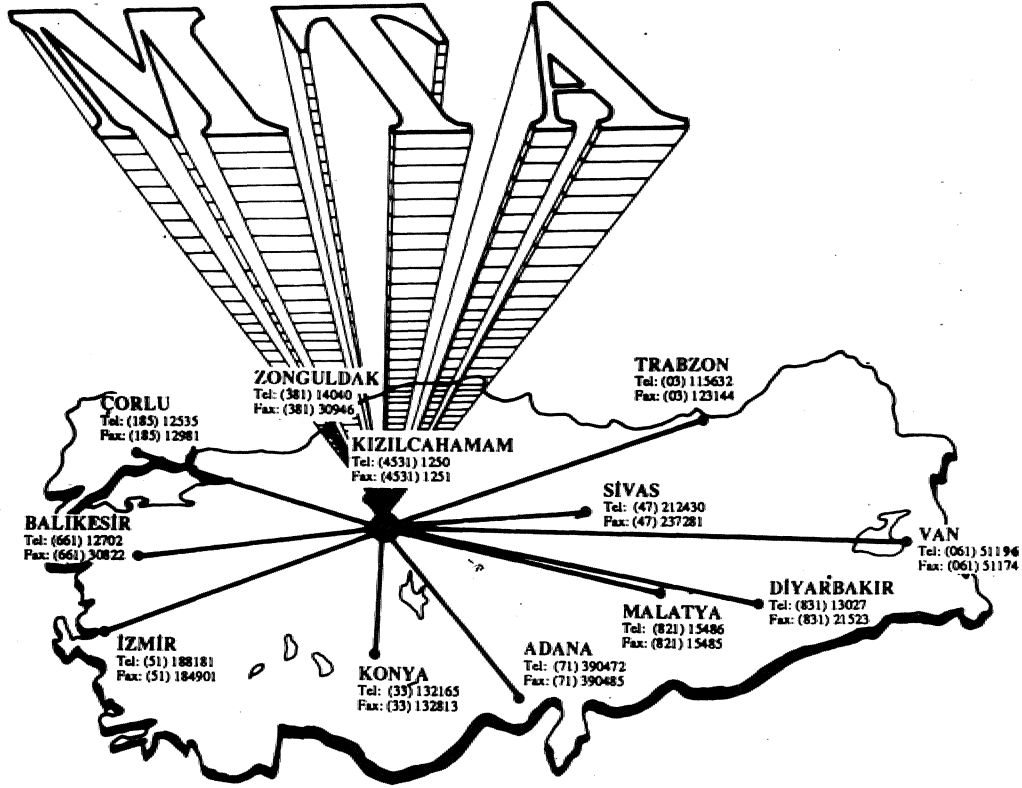
Ederi 1.000 TL

TMMOB Jeoloji Mühendisleri Odası

Bayındır Sokak 7/1 Yenişehir / ANKARA

Adresinden ve diğer il ve işyeri temsilciliklerimizden temin edebilirsiniz.

MADEN TETKİK VE ARAMA GENEL MÜDÜRLÜĞÜ



ALANINDA EN BÜYÜK KURULUŞ

- ✓ JEOLÖJİ VE JEOTEKNİK
- ✓ UZAKTAN ALGILAMA
- ✓ SONDAJ
- ✓ ANALİZ VE TEKNOLOJİ
- ✓ MADEN, ENDÜSTRİYEL VE ENERJİ HAMMADDE ETÜT VE ARAMA
- ✓ HİDROJEOLÖJİ
- ✓ JEOTERMAL
- ✓ TOPOĞRAFYA
- ✓ YÖNTEM GELİŞTİRME
- ✓ JEOFİZİK
- ✓ JEOMORFOLOJİ
- ✓ PAZAR ETÜDÜ
- ✓ PROJE VE FİZİBİLİTE
- ✓ MÜŞAVİRLİK

GENEL MÜDÜRLÜK: _____

TEL : (4) 287 34 30

TLX : 42741 - mta - tr
42040 - mta - tr

Fax: (4) 287 91 88

Adres : MTA 06520 - ANKARA

